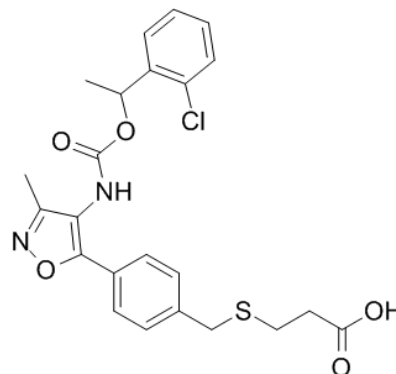


Product Name : Ki16425
Cat. No. : PC-43463
CAS No. : 355025-24-0
Molecular Formula : C₂₃H₂₃ClN₂O₅S
Molecular Weight : 474.96
Target : Lysophospholipid Receptor
Solubility : 10 mM in DMSO



Biological Activity

Ki16425 (Debio 0719) is a potent, subtype-selective, competitive antagonist of **lysophosphatidic acid receptor** LPA1, LPA2 and LPA3 with Ki of 0.34 μM, 6.5 μM and 0.93 μM, shows no activity at LPA4, LPA5, LPA6.

Ki16425 inhibits the LPA-induced response in the decreasing order of LPA1>LPA3>LPA2, inhibits LPA-induced guanosine 5'-O-(3-thio)triphosphate binding as well as LPA receptor binding to membrane fractions in intact cells.

Ki16425 also inhibits LPA-induced long-term responses, including DNA synthesis and cell migration in A431 cells, selectively inhibits LPA receptor-mediated actions, especially through LPA1 and LPA3.

Ki16425 reduces both ethanol-induced sedation and ethanol reward in mice, prevents the effects of ethanol on basal c-Fos expression in the medial prefrontal cortex and on adult neurogenesis in the hippocampus.

References

Ohta H, et al. *Mol Pharmacol*. 2003 Oct;64(4):994-1005.

Yamada T, et al. *J Biol Chem*. 2004 Feb 20;279(8):6595-605.

Zhao J, et al. *Transl Res*. 2015 Jul;166(1):80-8.

Sánchez-Marín L, et al. *Neuropharmacology*. 2018 May 1;133:189-201.

Caution: Product has not been fully validated for medical applications. Lab Use Only!

E-mail: tech@probechem.com